



ZHENGZHOU RUNXIANG MACHINERY EQUIPMENT CO.,LTD

Tel:0371 55960109

Fax: 86 371 55960109

Mobile:+8615838007835

Website:www.rxpelletmilling.com

E-mail: susan@pelletmilling.com

Whatsapp:+86-15838007835

Quotation for Raymond Mill

Introduction

Also known as Raymond Grinding Mill, Raymond Pendulum Mill, it is a vertical suspension roller mill for grinding non-metallic minerals into fine powder.

It is the most widely used grinding equipment in mining, chemical, construction, and metallurgy industries.

Raymond Mill



What are the raw materials used?



ZHENGZHOU RUNXIANG MACHINERY EQUIPMENT CO.,LTD

Tel:0371 55960109
 Mobile:+8615838007835
 E-mail: susan@pelletmilling.com

Fax: 86 371 55960109
 Website:www.rxpelletmilling.com
 Whatsapp:+86-15838007835

Applied in grinding various non plastic ore, mineral soil,metallic oxide, chemical composition etc. which Mohs hardness not more than grade 7,humidity less than 6% non flammable and combustibile material such as speckstone, dinas rock, graphite, fluorite, magnesia stone, bentonite, kaoline, pottery clay etc.



Limestone



Talcum



Gypsum



Sandstone



Dolomite



Calcite

Product Technical Information

Model	Number of Grinding Rollers	Max. Feed Size (mm)	Finished Product Fineness (mesh)	Hourly Capacity (t/h)	Main Motor Power (kW)	Blower Power (kW)	Classifier Power (kW)	Price (USD)
3R1510	3	10	80-325	0.3-1.2	7.5	5.5	1.1	\$4984
3R2615	3	20	80-325	0.5-2.7	18.5	15	2.2	\$10523
3R/4R3016	3/4	20	80-325	0.8-5	30	30	2.2	\$12738
4R3216	4	25	80-325	1.0-8	37	30	5.5	\$27692
4R3220	4	28	80-400	1-10	45	37	5.5	\$27692
5R4121	5	30	80-400	5-10	75	75	7.5	\$55384

Regarding Machine Dimensions: Since this machine is typically sold as part of a bundled system—and configurations vary—the final overall dimensions will differ depending on the specific setup. Please contact the manufacturer to obtain precise measurements.



ZHENGZHOU RUNXIANG MACHINERY EQUIPMENT CO.,LTD

Tel:0371 55960109

Fax: 86 371 55960109

Mobile:+8615838007835

Website:www.rxpelletmilling.com

E-mail: susan@pelletmilling.com

Whatsapp:+86-15838007835

Working Principle

The Raymond mill does not operate in isolation; rather, it functions in conjunction with a comprehensive equipment system. This system comprises a jaw crusher, bucket elevator, vibrating feeder, cyclone collector, blower, and bag filter, thereby establishing a closed-loop production line that spans the entire process—from raw material crushing to the collection of finished powder and dust removal. The operational principle of this production line can be summarized as follows: utilizing a vertical structural design, the system employs the centrifugal rolling action of grinding rollers to crush materials, while integrating pneumatic conveying and classification systems to achieve the continuous pulverization and classified collection of the processed materials.

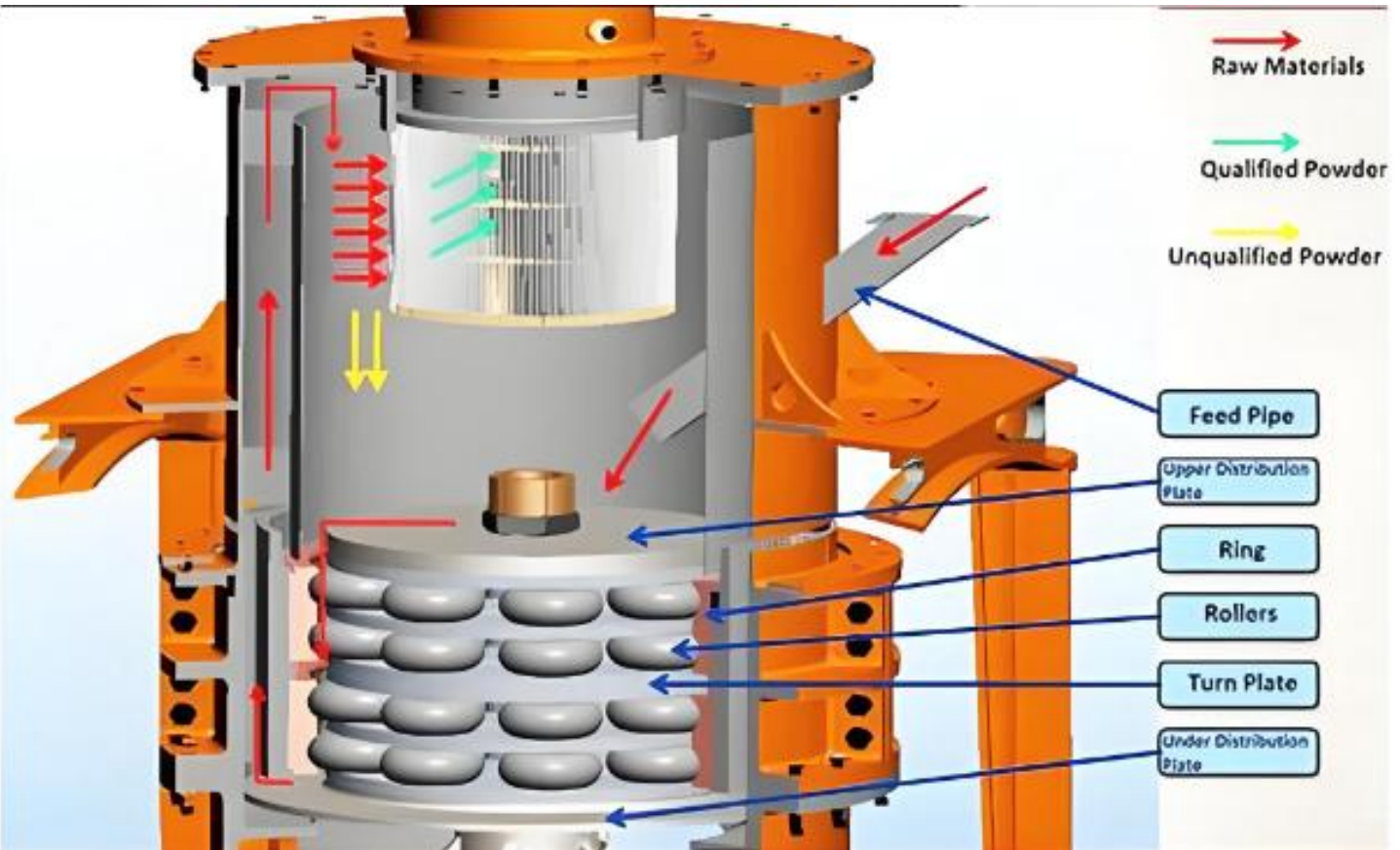
Raymond Mill

Consistent Fineness, High Output
Energy-Efficient, Durable & Wear-Resistant
No Clogging, Minimal Downtime





Introduction to Core Machinery Structure: Raymond Mill



Component Name	English Label	Core Function & Principle
Feed Pipe	Feed Pipe	The passage for raw materials entering the grinding chamber; materials fall into the grinding zone from here, marking the start of the entire grinding process.
Upper Distribution Plate	Upper Distribution Plate	Assists in uniform material distribution, guides coarse powder back to the grinding zone, and prevents local material accumulation.
Grinding Ring	Ring	A fixed annular wear-resistant liner, serving as the "fixed working surface" for grinding, which cooperates with the rollers to form the compression gap.
Grinding Rollers	Rollers	The core grinding components; under centrifugal force, they roll tightly against the ring to compress and grind materials into powder, making them the main wear parts.
Turn Plate / Spider Assembly	Turn Plate	The rotating component that drives the rollers to revolve; it is also equipped with shovels to continuously lift and throw materials between the rollers and the ring, ensuring grinding efficiency.



ZHENGZHOU RUNXIANG MACHINERY EQUIPMENT CO.,LTD

Tel:0371 55960109 Fax: 86 371 55960109
Mobile:+8615838007835 Website:www.rxpelletmilling.com
E-mail: susan@pelletmilling.com Whatsapp:+86-15838007835

Lower Distribution Plate	Under Distribution Plate	Works with the upper distribution plate to optimize airflow distribution inside the grinding chamber, guiding the airflow carrying powder upward into the classification zone.
--------------------------	--------------------------	--

What are the key core features?

Versatile Functionality, Economical Investment

Capable of grinding a wide variety of minerals and meeting diverse requirements for particle fineness, it entails low infrastructure costs, making it a highly cost-effective investment.

High Efficiency and Productivity, Massive Output

Boasting outstanding single-unit processing capacity, it successfully breaks through the production bottlenecks typically associated with traditional pendulum mills.

Integrated, Comprehensive Solutions

Equipped with specialized testing instrumentation, we provide comprehensive, end-to-end solutions encompassing design, equipment supply, construction, and after-sales service support.

Energy-Efficient and Eco-Friendly

Having obtained industrial environmental compliance certification, the system fully adheres to all national environmental protection standards.

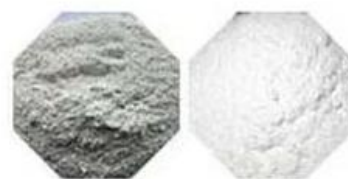
Mature and Robust Equipment

Backed by over a decade of experience in mill manufacturing—and having undergone continuous improvement and refinement across four generations of mill designs—the technology has reached a state of exceptional maturity and perfection.

Machine Product Showcase



More than 200 kinds of materials



Finished Power (Product size adjustable)



ZHENGZHOU RUNXIANG MACHINERY EQUIPMENT CO.,LTD

Tel:0371 55960109
Mobile:+8615838007835
E-mail: susan@pelletmilling.com

Fax: 86 371 55960109
Website:www.rxpelletmilling.com
Whatsapp:+86-15838007835

Unique Design

Advanced Transmission System

Features an integrated bevel gear transmission unit, delivering powerful and robust performance.

Oil-Lubricated Transmission System

Both the main shaft and the blower transmission systems utilize oil lubrication. With an oil change cycle of approximately four months, this design offers extended maintenance intervals and lower operating costs, while significantly reducing the frequency of maintenance tasks.

High-Performance Blower Configuration

The blower system employs oil lubrication, with an oil change cycle of approximately four months.

High-Precision, New-Generation Variable-Frequency Classifier

Equipped with a suspended cage-type classifier that utilizes variable-frequency control technology, enabling highly precise adjustment of powder fineness.



Key Considerations When Selecting a Raymond Mill

Once you have determined that the material is generally suitable, you must also consider the following factors to ensure optimal results:

Material Hardness: This is the primary factor, as it directly determines the service life of wear parts and overall production costs.

Feed Size: Raymond mills typically require an input particle size of 20–30 mm or less.

Product Fineness: The fineness of the finished product from a Raymond mill is typically adjustable within the range of 80 to 600 mesh (with the finest settings reaching approximately 1000 mesh); you must clearly define your specific target fineness.

Moisture and Viscosity: If the material is slightly moist, a complementary drying system can be integrated.

Output Requirements: The output capacity of different Raymond mill models varies, ranging from a few hundred kilograms to several tens of tons per hour.



ZHENGZHOU RUNXIANG MACHINERY EQUIPMENT CO.,LTD

Tel:0371 55960109
 Mobile:+8615838007835
 E-mail: susan@pelletmilling.com

Fax: 86 371 55960109
 Website:www.rxpelletmilling.com
 Whatsapp:+86-15838007835

Key Features

Mature and Robust Equipment

Backed by over a decade of experience in mill manufacturing—and having undergone continuous improvement and refinement across four generations of mill designs—the technology has reached a state of exceptional maturity and perfection.

Advanced Transmission System

Features an integrated bevel gear transmission unit, delivering powerful and robust performance.

The Oil-Lubricated Transmission System

utilizes lubricating oil to lubricate the spindle and fan transmission components; with an oil change interval of approximately four months, it extends maintenance intervals and reduces both operating and maintenance costs.

High-Performance Blower Configuration

The blower system employs oil lubrication, with an oil change cycle of approximately four months.

High-Precision, New-Generation Variable-Frequency Classifier

Variable frequency control technology is employed to achieve highly precise adjustment of powder fineness.



Technologically Advanced, Low Operating Costs

Incorporating the latest European technologies and holding numerous national patents, this pendulum mill stands as an industry leader, distinguished by its exceptional efficiency and low operating costs.

Versatile Functionality, Economical Investment This equipment can grind a variety of minerals to meet different fineness requirements.

High Efficiency and Productivity, Massive Output Boasting outstanding single-unit processing capacity, it successfully breaks through the production bottlenecks typically associated with traditional pendulum mills.

Integrated, Comprehensive Solutions Equipped with specialized testing instrumentation, we provide comprehensive, end-to-end solutions encompassing design, equipment supply, construction, and after-sales service support.

Energy-Efficient and Eco-Friendly Having obtained industrial environmental compliance certification, the system fully adheres to all national environmental protection standards.

Key Considerations When Selecting a Raymond Mill

Once you have determined that the material is generally suitable, you must also consider the following factors to ensure optimal results:

Material Hardness: This is the primary factor, as it directly determines the service life of wear parts and overall production costs.

Feed Size: Raymond mills typically require an input particle size of 20–30 mm or less.

Product Fineness: The fineness of the finished product from a Raymond mill is typically adjustable within the range of 80 to 600 mesh (with the finest settings reaching approximately 1000 mesh); you must clearly define your specific target fineness.



ZHENGZHOU RUNXIANG MACHINERY EQUIPMENT CO.,LTD

Tel:0371 55960109

Fax: 86 371 55960109

Mobile:+8615838007835

Website:www.rxpelletmilling.com

E-mail: susan@pelletmilling.com

Whatsapp:+86-15838007835

Moisture and Viscosity: If the material is slightly moist, a complementary drying system can be integrated.

Output Requirements: The output capacity of different Raymond mill models varies, ranging from a few hundred kilograms to several tens of tons per hour.



Typical Application Industries

Building Materials: Cement, Putty Powder, Gypsum Board

Chemicals: Rubber, Plastics, Coatings, Paper Fillers

Environmental Protection: Desulfurization Limestone Powder

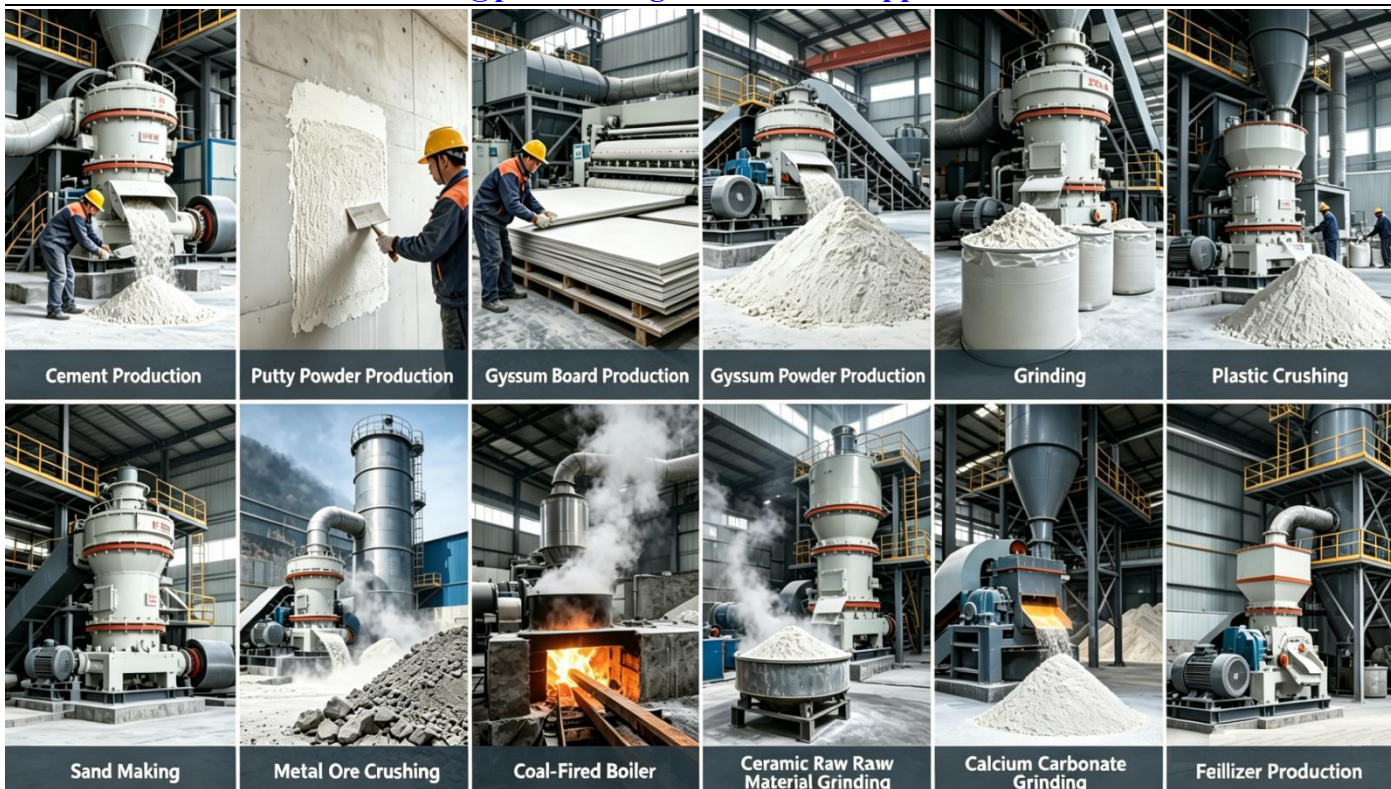
Metallurgy, Glass, and Ceramics (Raw Materials)

Feed and Fertilizer Additives (Calcium Powder)



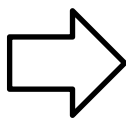
ZHENGZHOU RUNXIANG MACHINERY EQUIPMENT CO.,LTD

Tel:0371 55960109 Fax: 86 371 55960109
Mobile:+8615838007835 Website:www.rxpelletmilling.com
E-mail: susan@pelletmilling.com Whatsapp:+86-15838007835



How to pack?

Our castor bean hulling machines use custom-made cartons made from carefully selected high-strength solid wood to ensure stable and reliable packaging from the outset. The wood undergoes rigorous drying processes to maintain optimal moisture content, effectively preventing deformation and cracking caused by humidity fluctuations. This guarantees that the cartons maintain their structural integrity throughout long-distance transportation and storage.



Related production lines

This is a complete dry-process powder production line utilizing a Raymond mill. It is specifically designed to process medium-to-low hardness minerals—such as limestone, calcite, and barite—into industrial-grade powders, finding widespread application in sectors including building materials, chemicals, and environmental protection.

I. Overall Process Flow (From Raw Materials to Finished Products)



ZHENGZHOU RUNXIANG MACHINERY EQUIPMENT CO.,LTD

Tel:0371 55960109

Fax: 86 371 55960109

Mobile:+8615838007835

Website:www.rxpelletmilling.com

E-mail: susan@pelletmilling.com

Whatsapp:+86-15838007835

Raw Material Crushing → Lifting & Conveying → Quantitative Feeding → Main Mill Grinding → Classification & Separation → Finished Product Collection → Dust Removal & Purification

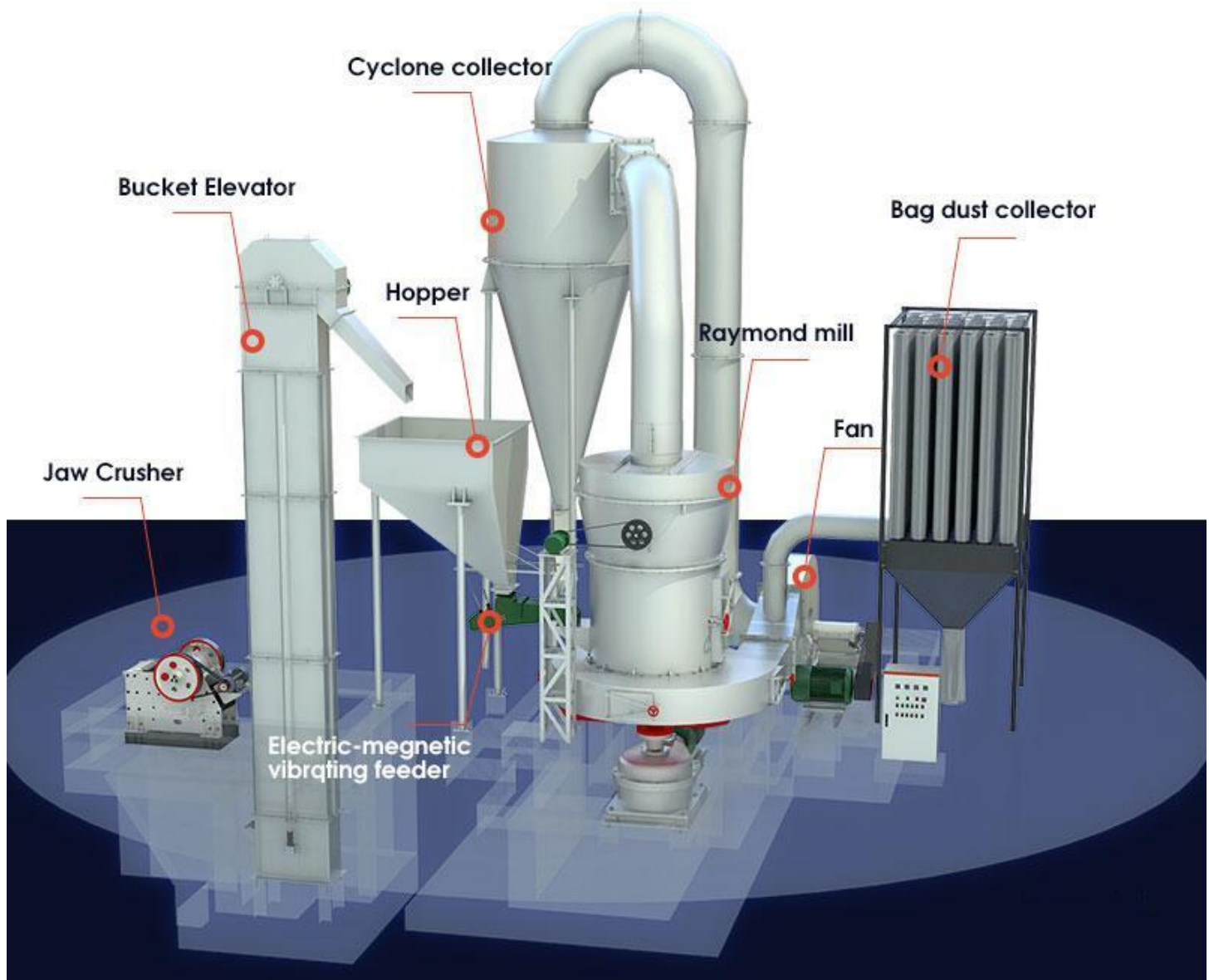
Core Advantages of the Production Line

Full Negative-Pressure Operation: Ensures zero dust leakage, meets environmental compliance standards, and maintains a clean workshop environment.

High Degree of Automation: The entire process—from feeding to collection—is controlled via PLC systems, resulting in significantly reduced labor costs.

Adjustable Product Fineness: The fineness (mesh size) of the powder can be flexibly controlled by adjusting the classifier's rotational speed, thereby meeting the diverse requirements of various industries.

High Cost-Effectiveness: Compared to large-scale equipment such as vertical roller mills, this system entails lower initial investment costs, making it an ideal solution for small-to-medium scale powder processing projects.





ZHENGZHOU RUNXIANG MACHINERY EQUIPMENT CO.,LTD

Tel:0371 55960109

Fax: 86 371 55960109

Mobile:+8615838007835

Website:www.rxpelletmilling.com

E-mail: susan@pelletmilling.com

Whatsapp:+86-15838007835

Factory display pictures





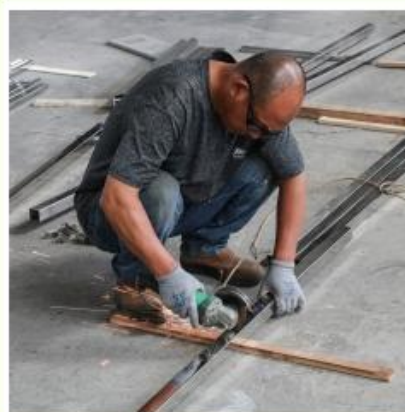
ZHENGZHOU RUNXIANG MACHINERY EQUIPMENT CO.,LTD

Tel:0371 55960109 Fax: 86 371 55960109
Mobile:+8615838007835 Website:www.rxpelletmilling.com
E-mail: susan@pelletmilling.com Whatsapp:+86-15838007835

How about the customer feedback?

Feedback

13.About us





ZHENGZHOU RUNXIANG MACHINERY EQUIPMENT CO.,LTD

Tel:0371 55960109
Mobile:+8615838007835
E-mail: susan@pelletmilling.com

Fax: 86 371 55960109
Website:www.rxpelletmilling.com
Whatsapp:+86-15838007835



Golden Supplier



SGS



Top 1 Alibaba Supplier

9.How about cooperation client?





ZHENGZHOU RUNXIANG MACHINERY EQUIPMENT CO.,LTD

Tel:0371 55960109
Mobile:+8615838007835
E-mail: susan@pelletmilling.com

Fax: 86 371 55960109
Website:www.rxpelletmilling.com
Whatsapp:+86-15838007835

Customer visits



aARMENIA



Tanzania



Côte d'Ivoire



Germany



Congo



Cameroon



South Africa



Ethiopia



Thailand



Uzbekistan



India



Ghana

14.Our Certification:

